



Future Capability Needs of the Primary Industries

Richard Lynch
Principal Adviser
Ministry for Primary Industries

Growing and Protecting New Zealand



Ministry for Primary Industries
Manatū Ahu Matua



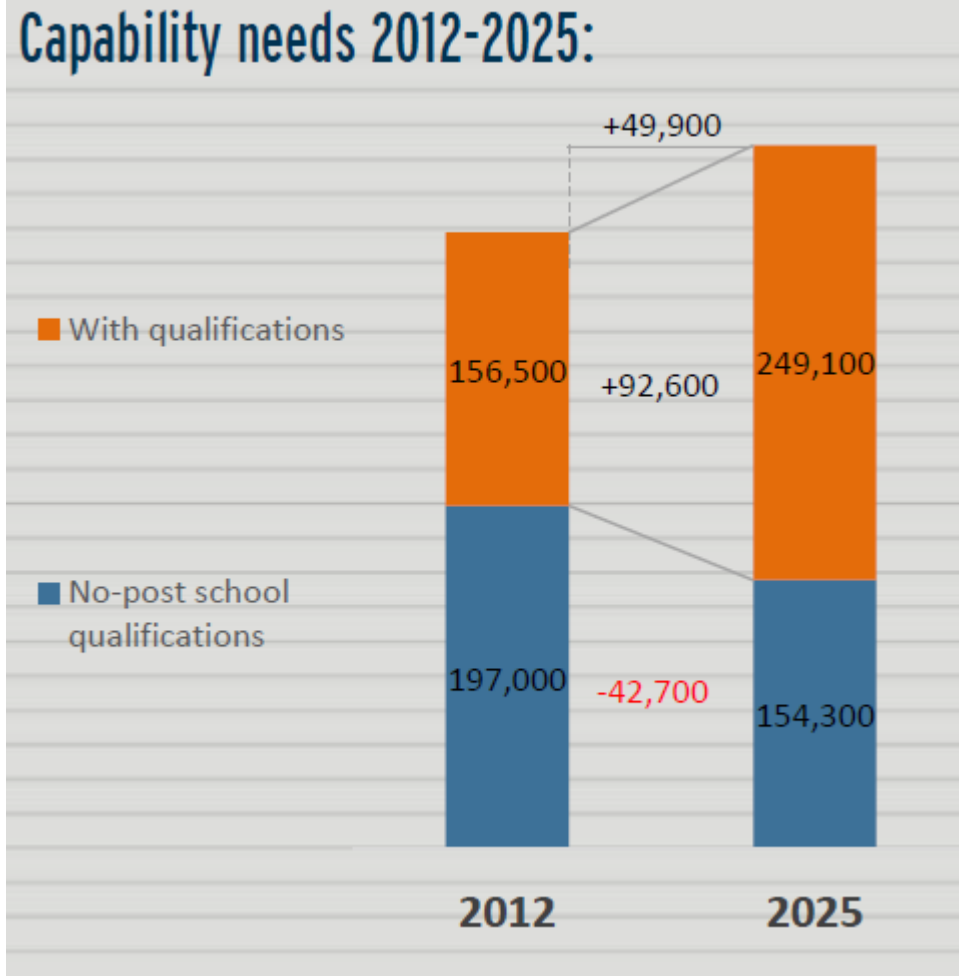
PEOPLE POWERED

Building capabilities to keep New Zealand's
primary industries internationally competitive



By 2025 the primary industries will need

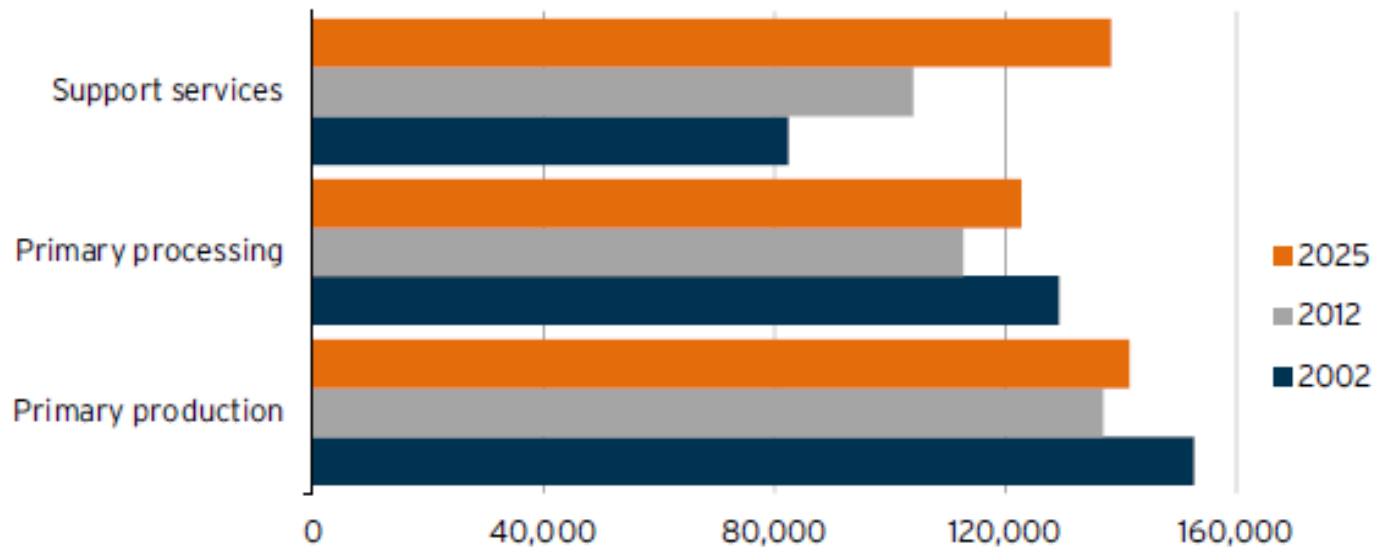
- 50,000 more people
- 92,600 more people with qualifications
- Overall capability increase - recruitment and up-skilling



Where in the value chain is the employment growing

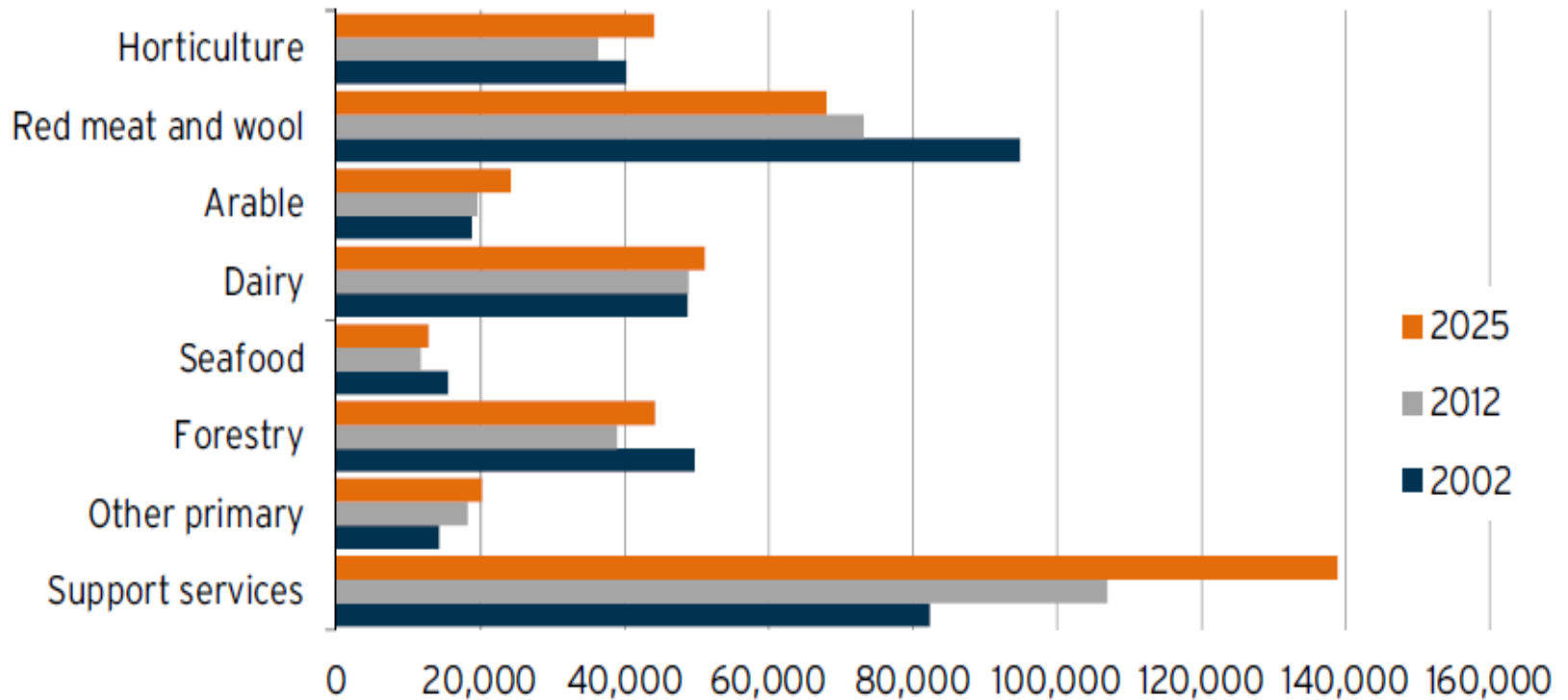
Employment in primary industries by activity

June year average, job count

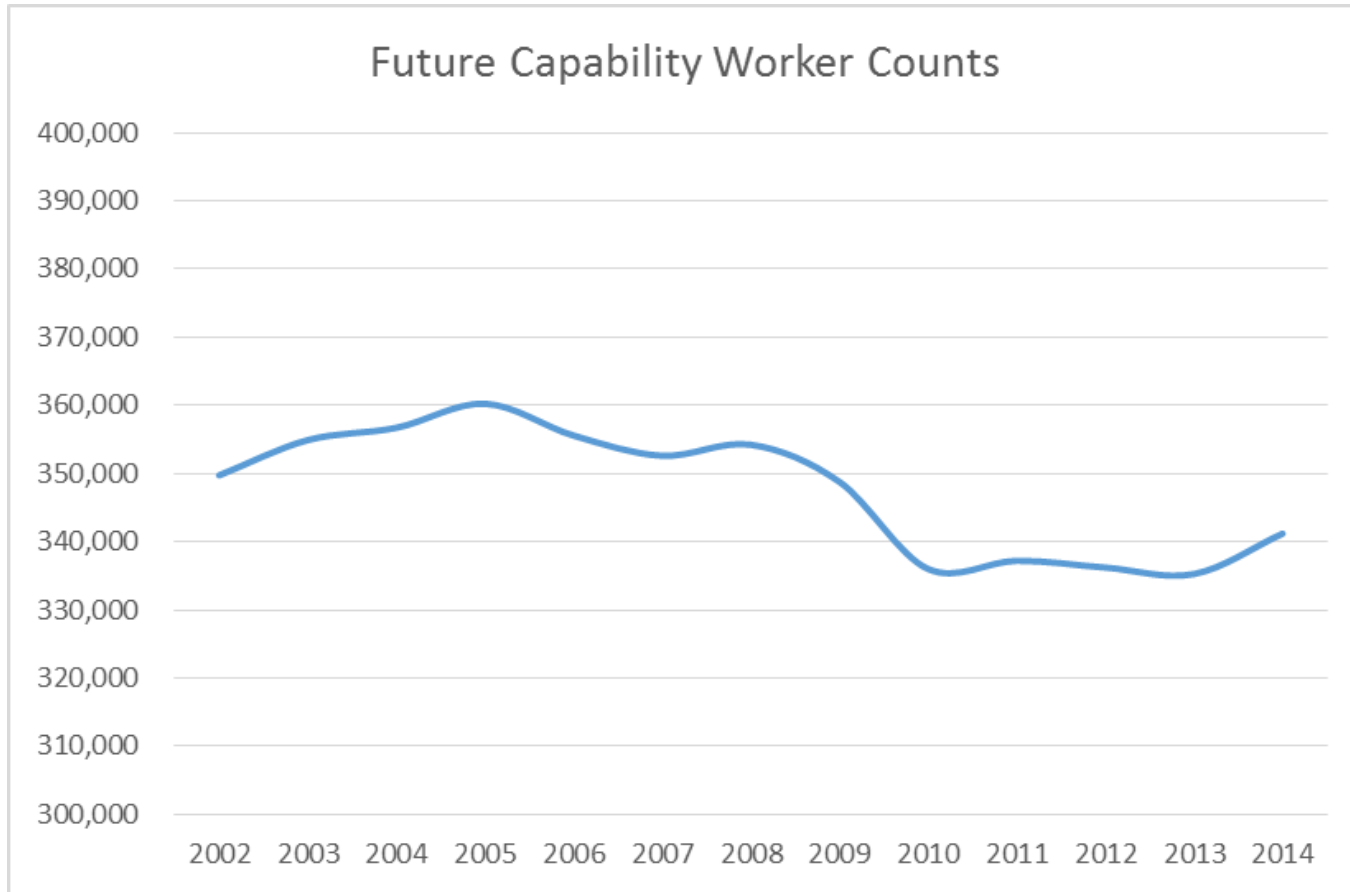


Forecast change by sector

Employment in primary industries
June year average, job count

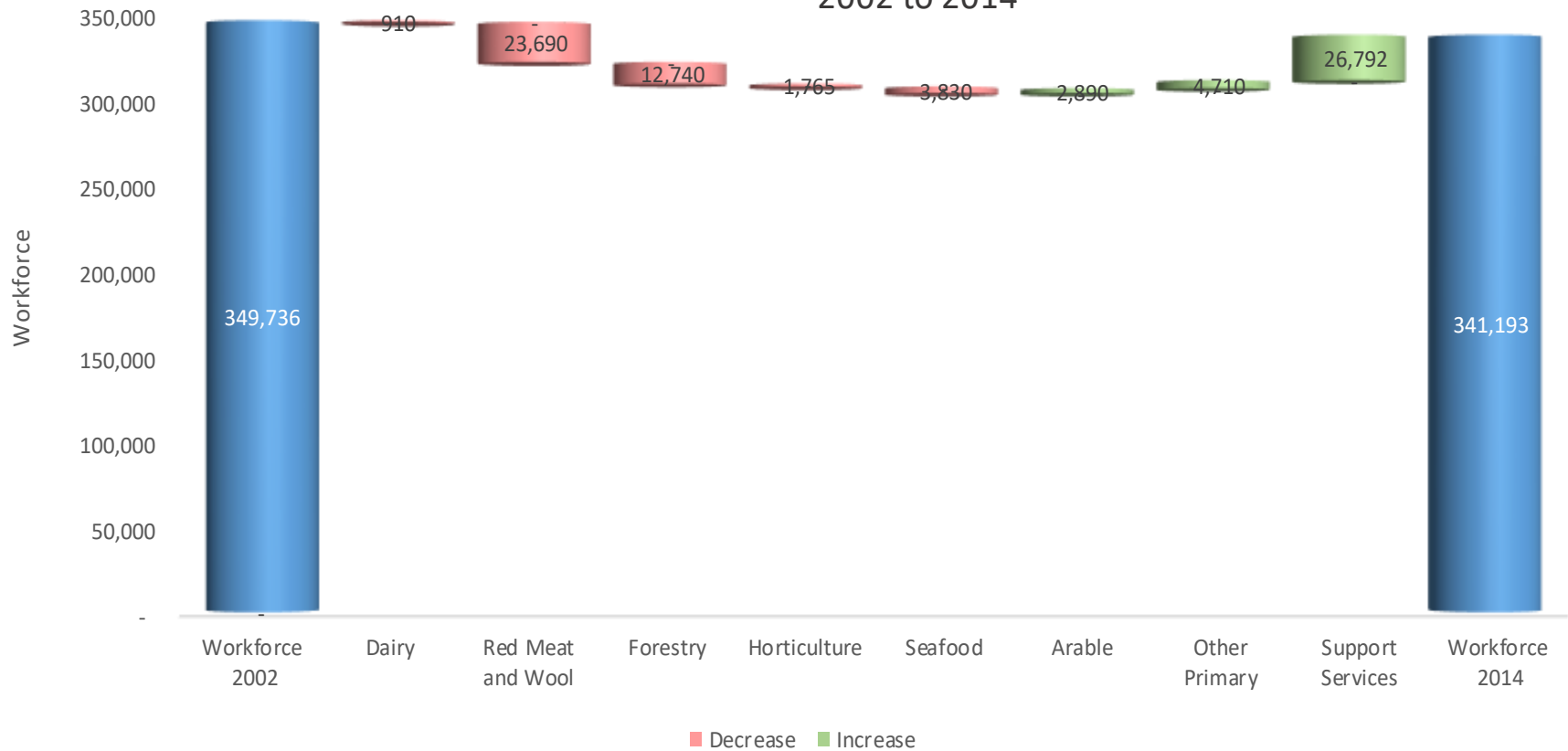


Primary Industry Employment



How sector employment has changed over time

Primary Industries Workforce
2002 to 2014



Key Findings from the Report

- 16% of national employment but 22% of employment regionally
- Gross Employment in Primary Industry will grow from 350,000 in 2012 to 400,000 in 2025
- Growth mainly in Support Services
- Critical need is to lift overall capability
- Demand for training will be greater than employment growth
- By 2025 the Primary Industries will need *92,600 more workers with qualifications*
- Between 2012 and 2025 need to train an additional 235,000 to replace the natural attrition of workers within the industry
- Skills needed to deliver on industry strategies :
 - *Production skills (whole farm systems, resource management, staff management)*
 - *Science skills to develop new products and processes*
 - *Marketing skills in new markets*
 - *Engineering skills to develop new processes*
 - *Technical and management support*
- Will be regional shifts eg fewer farmers in Waikato but more in Canterbury

Going from \$400 million to over \$1 billion – that's a lot of growth.

Do we have the people with the right skills to take us there?

Gary Hooper, Aquaculture New Zealand

We need a wide range of **highly trained people** if we are to unpack the full potential of the tree in future.

Jon Tanner, Wood Processors and Manufacturers Association

